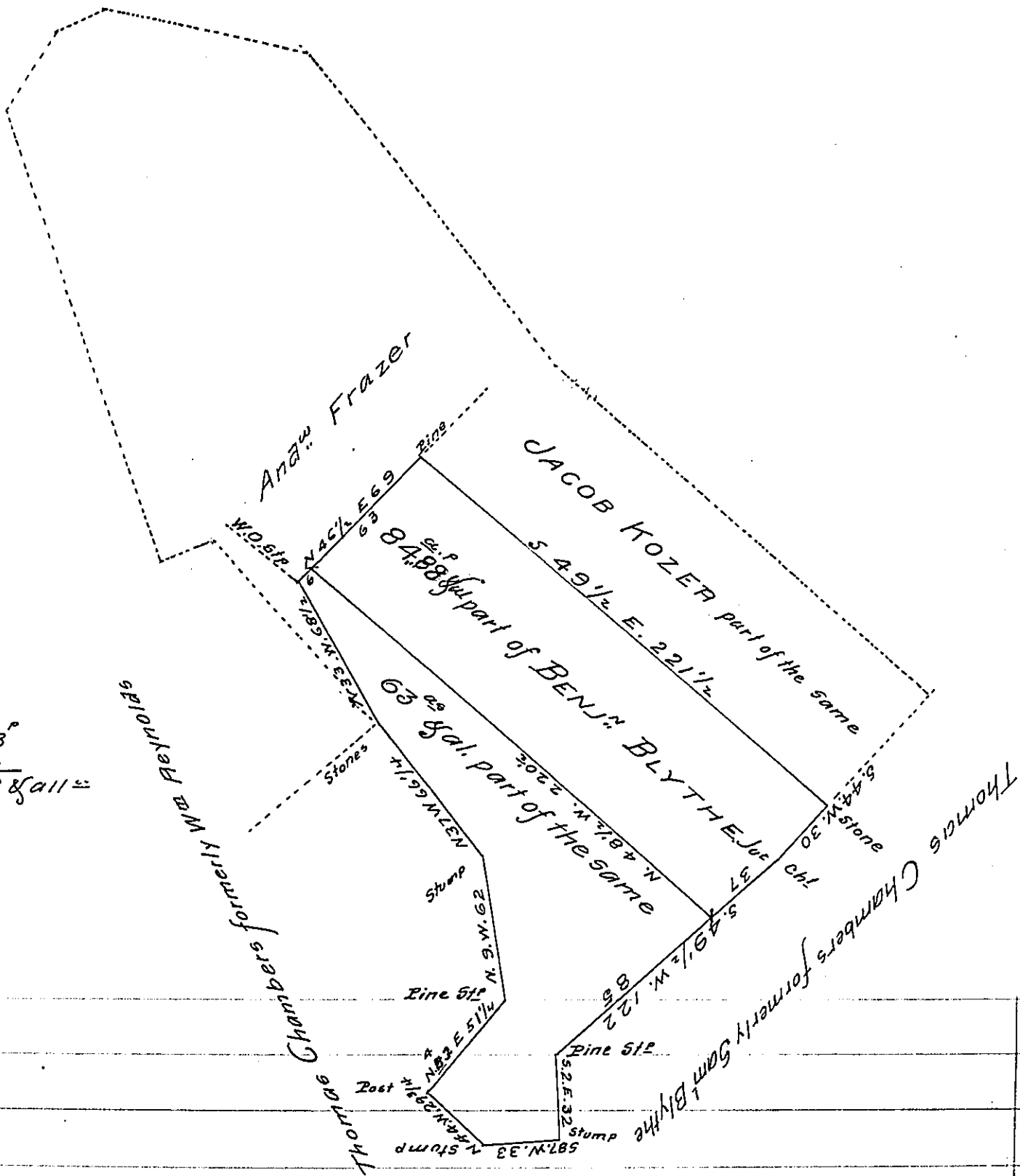


$84^{\circ} 88'$
 63.00

 $147 88 \frac{1}{2}$ all =



The above described two Lots of Land containing together One hundred & forty seven acres & Eighty eight perches and allowance of six per cent for roads &c. are parts of a larger tract of $405 \frac{1}{2}$ acres situate in Southampton Township Franklin County, which was Resurveyed 19th August 1812 (agreeable to a Special Order of the Board of Property) in pursuance of a Warrant granted to Benjamin Blythe Jun^r bearing date the 2nd December 1785. Resurveyed for Thomas Chambers the 15th of March 1833

To Jacob Spangler Esq^r
 Surveyor General,

William L. Davis D.S.

IN TESTIMONY that the above is a copy of the original remaining on file in the Department of Internal Affairs of Pennsylvania, made conformably to an Act of Assembly approved the 16th day of February 1833, I have hereunto set my hand and caused the Seal of said Department to be affixed at Harrisburg, this eleventh day of September 1907

Henry Houck
 Secretary of Internal Affairs.